

Providing a Quality Education in an Increasingly Challenging Environment

Achieving Success One Student at a Time

EPHRATA AREA SCHOOL DISTRICT



It is the mission of the Ephrata Area School District to provide all students a secure learning environment and exemplary academic programs that inspire all students to reach their full potential.

EPHRATA AREA SCHOOL DISTRICT

803 Oak Boulevard
Ephrata, PA 17522

Phone: (717) 721-1513

Mr. Tim Stayer, Board President
Timothy_Stayer@easdpa.org

Dr. Brian Troop, Superintendent
B_Troop@easdpa.org

A Spotlight on Challenges for Public Education

A History of State Funding to the District

	ACTUAL 2009-10	ACTUAL 2010-11	ACTUAL 2011-12	ACTUAL 2012-13	ACTUAL 2013-14	Budgeted 2014-15
Basic Subsidy	7,959,685	7,708,171	8,686,957	8,686,783	8,896,680	9,188,765
ARRA (Stimulus funds)	1,069,846	1,792,300				
Edujobs			9,335	461		
Total Basic Ed Funding	9,029,531	9,500,471	8,696,292	8,687,244	8,896,680	9,188,765

Special Education	2,045,916	2,035,116	2,063,017	2,035,116	2,080,940	2,101,168
Retirement	548,802	647,110	1,001,545	1,447,588	2,010,689	2,500,000

**Increase
from 2009-
2010 is
\$1,951,798**

A History of State Funding Adjusted for Pension

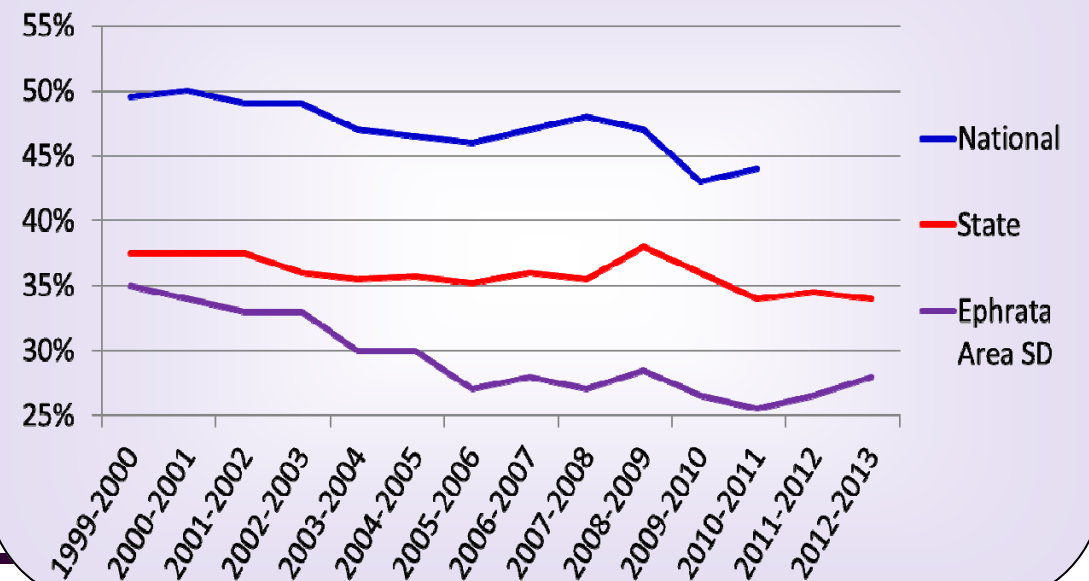
	ACTUAL 2009-10	ACTUAL 2010-11	ACTUAL 2011-12	ACTUAL 2012-13	ACTUAL 2013-14	Budgeted 2014-15
Total State Revenue	14,547,444	14,226,750	14,968,623	15,544,941	16,373,097	17,178,026
ARRA (Stimulus funds)	1,069,846	1,792,300				
Edujobs			9,335	461		
Adjusted State Revenue	15,617,290	16,019,050	14,977,958	15,545,402	16,373,097	17,178,026
Less 5-Year Pension Growth						1,951,798
Equivalent State Funding						15,226,228
Difference						(391,062)

District Act 1 Rate Cap vs. Pension

2013-2014 Millage	Act 1 Rate x Millage 2.60%	2014-2015 Millage	2014-2015 Assessed Value	2014-2015 Max Act 1 Increase
19.60	0.50	20.10	\$1,896,000,000	\$ 948,000

2013-2014 Salary	2013-2014 Pension Rate 16.93 %	2014-2015 Pension Rate 21.41%	2014-2015 Pension Rate Increase (Gross & Net)	Act 1 Rate vs. Pension Net
\$ 25,700,000	\$ 4,351,010	\$ 5,502,370	\$ 1,151,360	
		District portion	\$ 575,680	\$ 372,320

Average State Share of PK-12 Education Funding

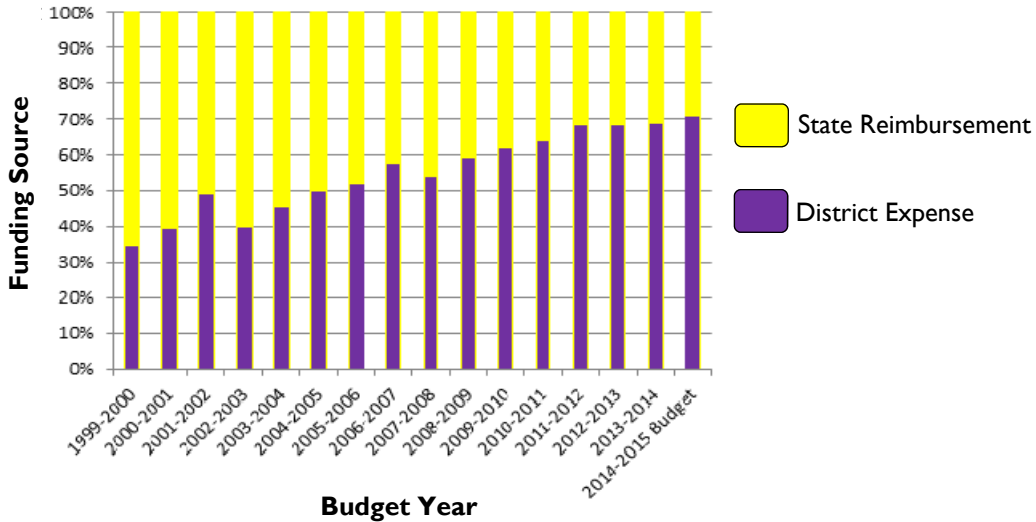


Achieving Success One Student at a Time

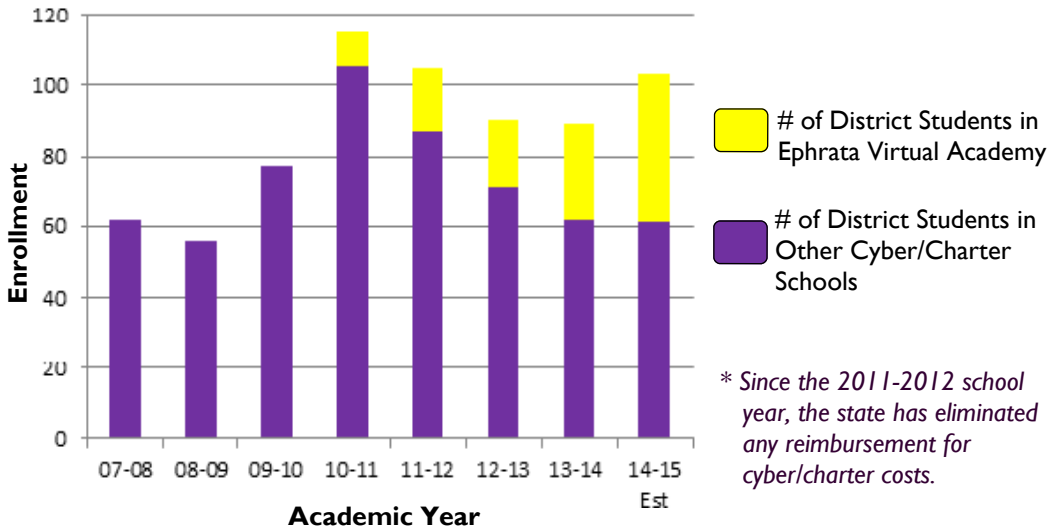


A Spotlight on Challenges for Public Education

Special Education



Cyber/Charter Schools*



* Since the 2011-2012 school year, the state has eliminated any reimbursement for cyber/charter costs.